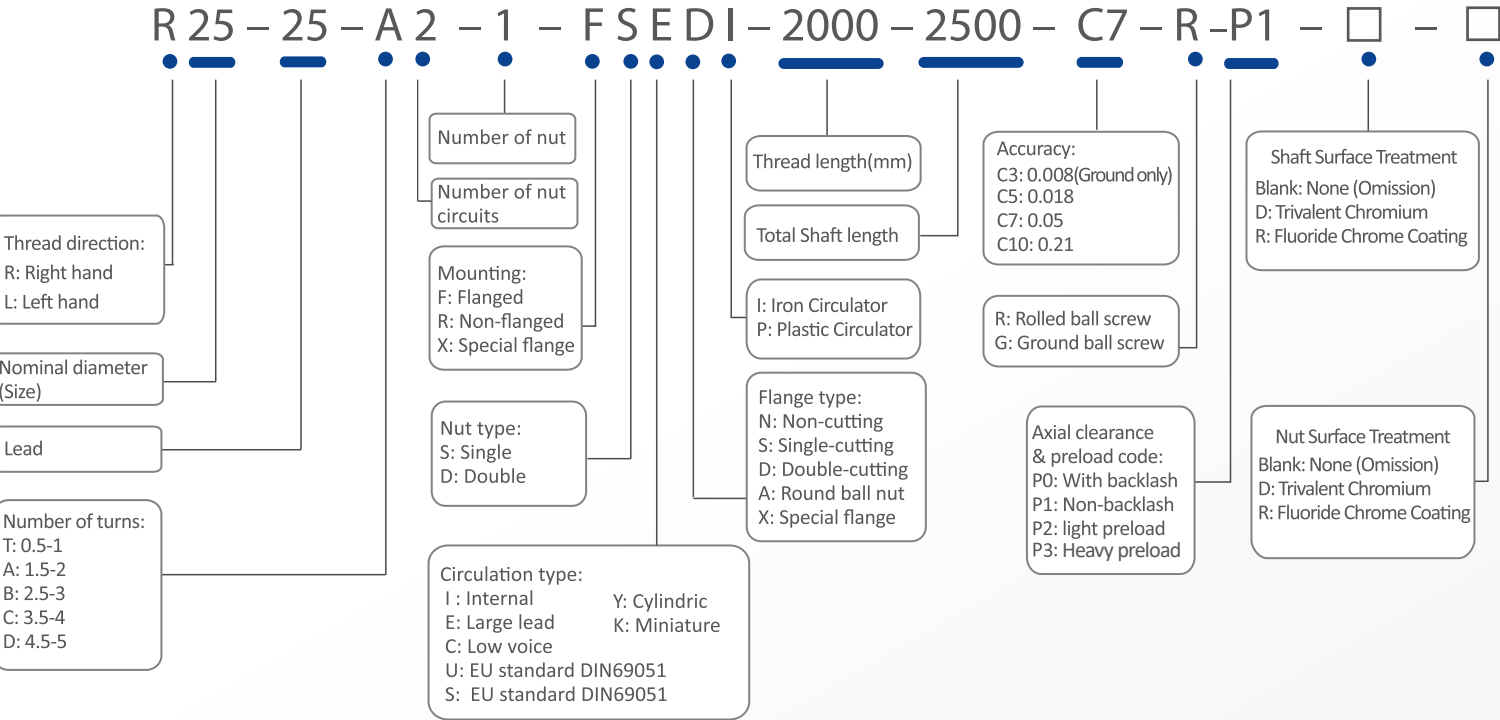


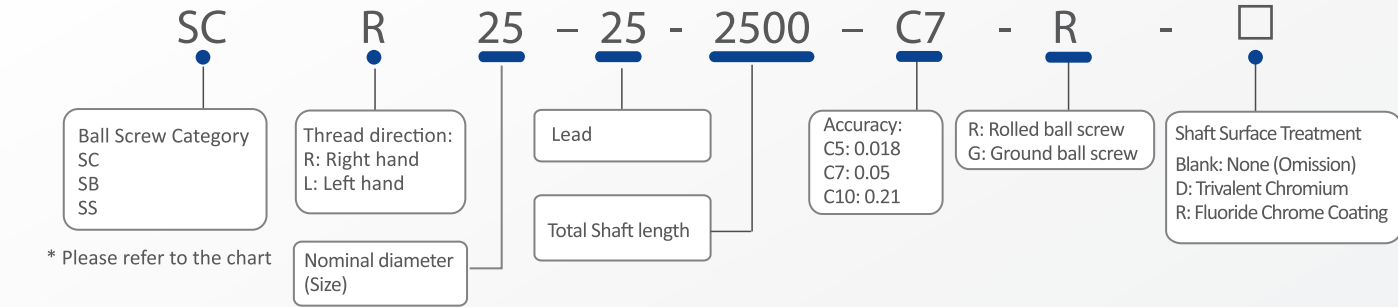
Ball Screw Model Number Coding



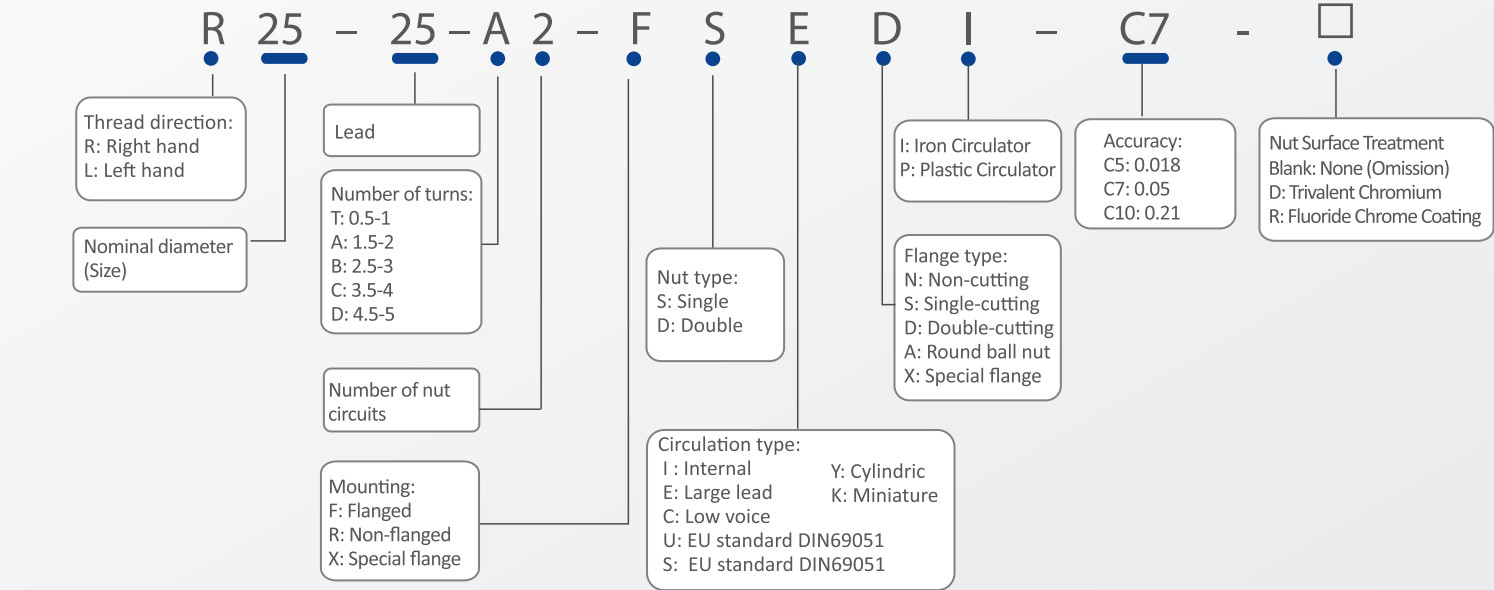
Ball Screw

Compact Design / Low Noise / High Precision

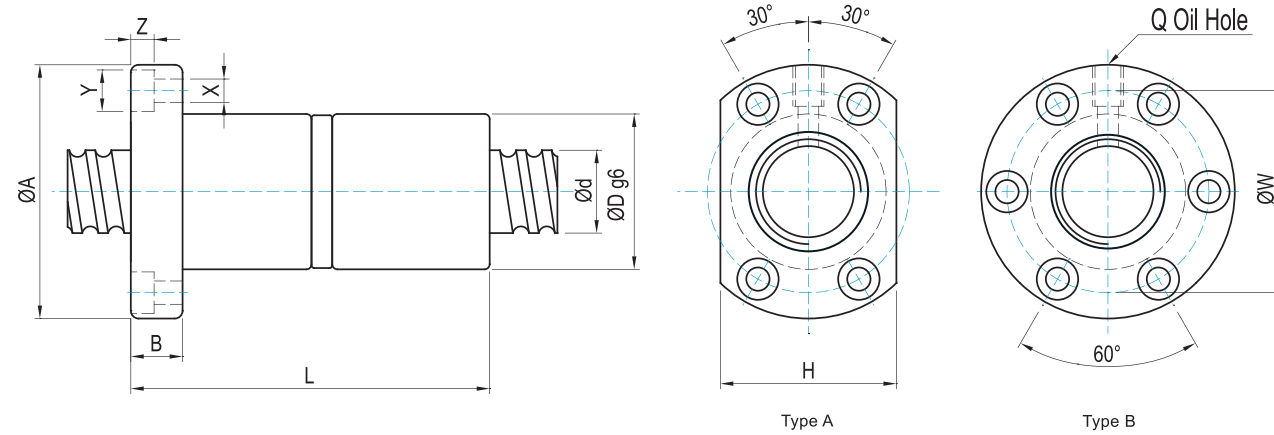
Shaft Model Number Coding



Nut Model Number Coding



FDI Type

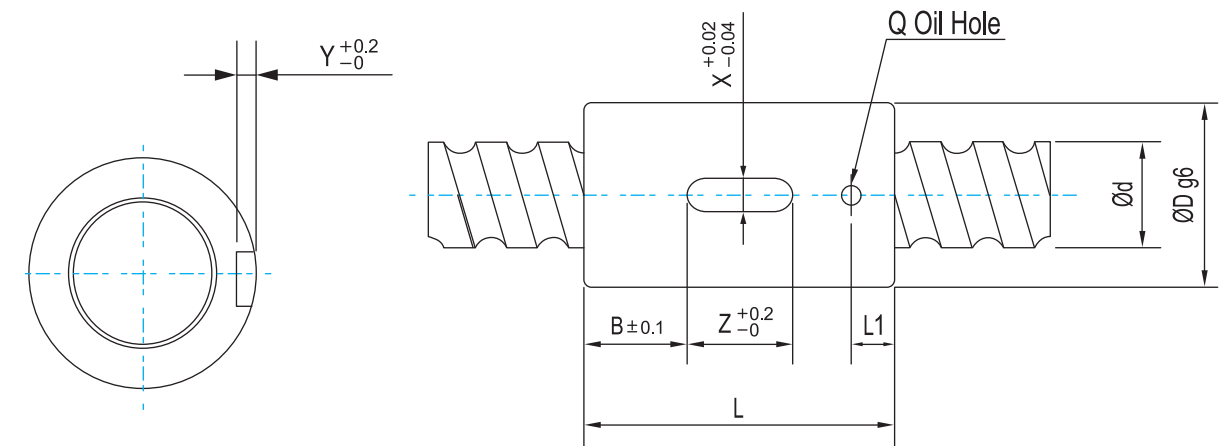


Unit : mm

Model No.	Dimensions															
	d	l	Da	D	A	B	L	W	X	Y	Z	Type	H	Q	n	Ca(kgf)
★ 1605-3	16	5	3.175	30	49	10	80	39	4.5	8	4.5	A	34	M6	T3	1063
★ 2005-4	20	5	3.175	34	57	12	92	45	5.5	9.5	5.5	A	40	M6	T4	1527
★ 2504-4	25	4	2.381	40	63	11	80	51	5.5	9.5	5.5	A	46	M6	T4	1173
★ 2505-4	25	5	3.175	40	63	12	92	51	5.5	9.5	5.5	A/B	46	M8	T4	1716
2510-4	25	10	4.762	46	72	12	156	58	6.5	11	6.5	A	52	M6	T4	2894
★ 3205-4	32	5	3.175	46	72	12	92	58	6.5	11	6.5	A	52	M8	T4	1932
3210-4	32	10	6.35	54	88	16	160	70	9	14	8.5	A	62	M8	T4	4765
★ 4005-4	40	5	3.175	56	90	16	96	72	9	14	8.5	A	64	M8	T4	2147
4010-4	40	10	6.35	62	104	18	162	82	11	17.5	11	A	70	M8	T4	5331
5010-4	50	10	6.35	72	114	18	162	92	11	17.5	11	A/B	82	M8	T4	5986
6310-4	63	10	6.35	85	131	22	182	107	14	20	13	B	-	M8	T4	6727
6320-3	63	20	9.525	95	153	23	253	123	18	26	17.5	B	-	M8	T3	8931
8010-4	80	10	6.35	105	150	22	182	127	14	20	13	B	-	M8	T4	7519
8020-3	80	20	9.525	115	173	23	253	143	18	26	17.5	B	-	M8	T3	10076

★Left-handed thread is available.

RSY Type

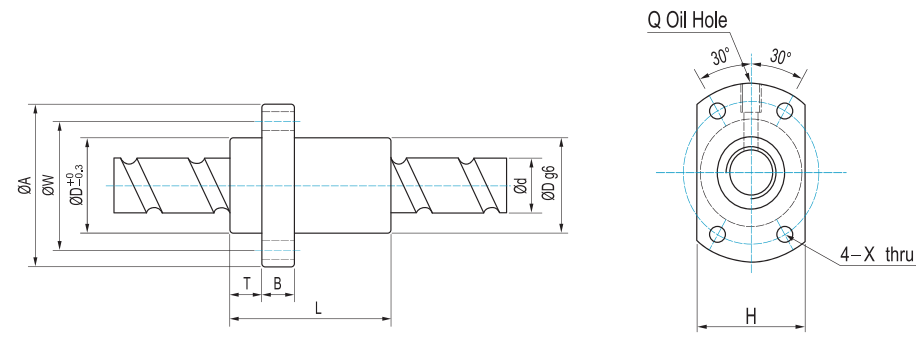


Unit : mm

Model No.	Dimensions													
	d	l	Da	D	L	B	X	Y	Z	Q	L1	n	Ca(kgf)	Coa(kgf)
1202-3	12	2	1.2	24	30	9	3	1.5	12	Ø3	4	T3	263	617
1204-3	12	4	2.381	24	35	11.5	3	1.5	12	Ø3	5	T3	637	1117
1205-3	12	5	2	24	40	14	3	1.5	12	Ø3	5	T3	506	952
1205-4	12	5	2	24	36	10	3	1.5	12	Ø3	5	T4	667	1426
1210-2	12	10	2	24	40	14	3	1.5	12	Ø3	5	T2	380	730
1602-3	16	2	1.2	28	40	10	5	2	20	Ø3	5	T3	301	837
1604-4	16	4	2.381	28	45	12.5	5	2	20	Ø3	7	T4	939	2048
1605-3	16	5	3.175	28	45	12.5	5	2	20	Ø3	7	T3	1063	1957
★ 1605-4	16	5	3.175	28	50	15	5	2	20	Ø3	7	T4	1361	2609
1610-3	16	10	3.175	28	45	12.5	5	2	20	Ø3	7	T3	1164	2405
1616-2	16	16	3.175	28	45	12.5	5	2	20	Ø3	7	T2	821	1603
2005-3	20	5	3.175	36	47	13.5	5	2	20	Ø3	7	T3	1192	2542
★ 2005-4	20	5	3.175	36	53	16.5	5	2	20	Ø3	7	T4	1527	3390
2010-3	20	10	3.969	36	54	17	5	2	20	Ø3	7	T3	1749	3808
2020-4	20	20	3.175	36	55	17.5	5	2	20	Ø3	7	T4	1639	3979
★ 2505-4	25	5	3.175	40	53	16.5	5	2	20	Ø3	7	T4	1716	4357
2510-3	25	10	3.5	40	54	17	5	2	20	Ø3	7	T3	1614	4071
★ 3205-4	32	5	3.175	50	53	11.5	6	2.5	30	Ø3	7	T4	1932	5705
3210-3	32	10	6.35	50	70	20	6	2.5	30	Ø3	7	T3	3721	7924
3220-3	32	20	3.969	50	78	24	6	2.5	30	Ø3	7	T3	2136	5917
★ 4005-4	40	5	3.175	63	56	13	6	2.5	30	Ø3	7	T4	2147	7250
4010-3	40	10	6.35	63	80	25	6	2.5	30	Ø3	7	T3	4163	10227
4020-3	40	20	5.556	63	83	26.5	6	2.5	30	Ø3	7	T3	3746	10492
5010-3	50	10	6.35	75	82	23	6	2.5	36	Ø3	7	T3	4674	13126
6310-4	63	10	6.35	85	90	29	6	3.5	32	Ø5	14	T4	6727	22820

★Left-handed thread is available.

FSE Type

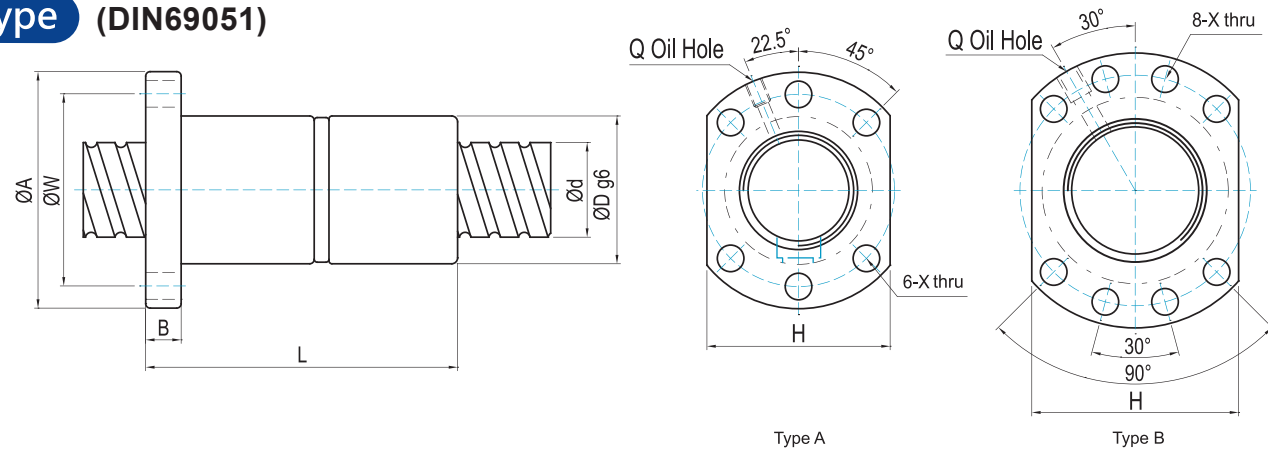


Unit : mm

Model No.	Dimensions														
	d	l	Da	D	A	B	T	L	W	X	H	Q	n	Ca(kgf)	Coa(kgf)
1616-3.6	16	16	3.175	32	53	10	10.5	48	42	4.5	38	M6	A2	1361	2886
★ 2020-3.6	20	20	3.175	39	62	10	10.8	55	50	5.5	46	M6	A2	1497	3581
2520-3.6	25	20	3.5	47	74	12	11	65	60	6.6	49	M6	A2	1888	4885
2525-3.6	25	25	3.969	47	74	12	11.2	67	60	6.6	56	M6	A2	2236	5590
★ 3232-3.6	32	32	4.762	58	92	15	14	82	74	9	68	M6	A2	3197	8612
★ 4040-3.6	40	40	6.35	73	114	17	17	100	93	11	84	M6	A2	5225	14404
5050-3.6	50	50	7.938	90	135	20	21.5	125	112	14	92	M6	A2	7838	22704
1632-1.6	16	32	2.778	32	53	10	10.1	42.5	42	4.5	34	M6	T2	566	1125
2040-1.6	20	40	3.175	39	62	10	13	51	50	5.5	41	M6	T2	748	1603
2550-1.6	25	50	3.969	47	74	12	15	58	60	6.6	49	M6	T2	1118	2507

★ Left-handed thread is available.

FDU Type (DIN69051)

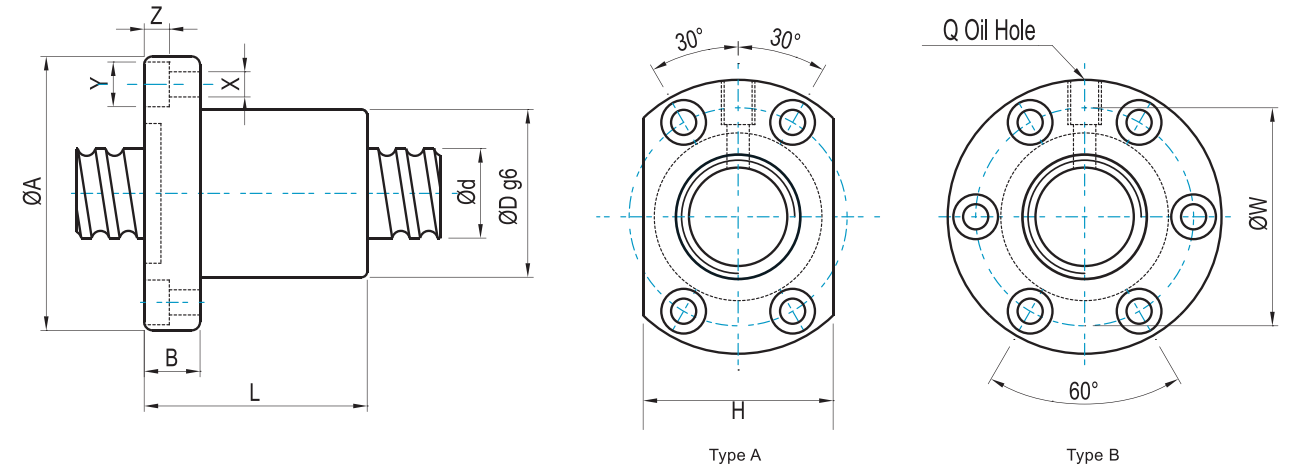


Unit : mm

Model No.	Dimensions														
	d	l	Da	D	A	B	L	W	X	Type	H	Q	n	Ca(kgf)	Coa(kgf)
★ 1605-3	16	5	3.175	28	48	10	80	38	5.5	A	40	M6	T3	1063	1957
★ 2005-4	20	5	3.175	36	58	12	92	47	6.6	A	44	M6	T4	1527	3390
★ 2505-4	25	5	3.175	40	62	12	92	51	6.6	A	48	M6	T4	1716	4357
2510-4	25	10	4.762	40	62	12	153	51	6.6	A	48	M6	T4	2896	6210
★ 3205-4	32	5	3.175	50	80	12	92	65	9	A	62	M6	T4	1932	5705
3210-4	32	10	6.35	50	80	16	160	65	9	A	62	M6	T4	4765	10565
4005-4	40	5	3.175	63	93	15	96	78	9	B	70	M8	T4	2147	7250
4010-4	40	10	6.35	63	93	18	162	78	9	B	70	M8	T4	5331	13636
5010-4	50	10	6.35	75	110	16	162	93	11	B	85	M8	T4	5986	17502
6310-4	63	10	6.35	90	125	18	182	108	11	B	95	M8	T4	6727	22820
6320-3	63	20	9.525	95	135	20	253	115	13.5	B	100	M8	T3	8931	24831
8010-4	80	10	6.35	105	145	20	182	125	13.5	B	110	M8	T4	7519	29386
8020-3	80	20	9.525	125	165	25	253	145	13.5	B	130	M8	T3	10076	32217

★ Left-handed thread is available.

FSI Type

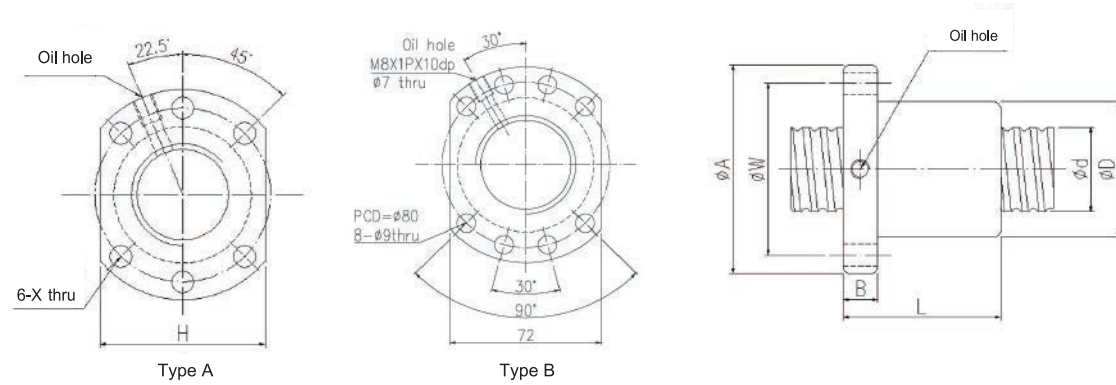


Unit : mm

Model No.	Dimensions														
	d	l	Da	D	A	B	L	W	X	Y	Z	Type	H	Q	n
1404-4	14	4	2.381	26	46	10	47	36	4.5	8	4.5	A	34	M6	T4
1405-3	14	5	3.175	26	46	10	45	36	4.5	8	4.5	A	34	M6	T3
★ 1604-4	16	4	2.381	30	49	10	45	39	4.5	8	4.5	A	34	M6	T4
1605-3	16	5	3.175	30	49	10	42	39	4.5	8	4.5	A/B	34	M6	T3
★ 1605-4	16	5	3.175	30	49	10	50	39	4.5	8	4.5	A/B	34	M6	T4
1610-4	16	10	3.175	34	58	10	54.6	45	5.5	9.5	5.5	A	36	M6	T4
★ 2005-4	20	5	3.175	34	57	12	53	45	5.5	9.5	5.5	A/B	40	M6	T4
2010-3	20	10	3.969	46	74	13	54	59	6.6	11	5.5	A	46	M6	T3
2504-4	25	4	2.381	40	63	11	46	51	5.5	9.5	5.5	A	46	M6	T4
★ 2505-4	25	5	3.175	40	63	12	53	51	5.5	9.5	5.5	A/B	46	M8	T4
2510-4	25	10	4.762	46	72	12	85	58	6.5	11	6.5	A/B	52	M6	T4
★ 3205-4	32	5	3.175	46	72	12	53	58	6.5	11	6.5	A/B	52	M8	T4
3206-4	32	6	3.969	62	89	12	63	75	6.5	11	6.5	B	-	M8	T4
3210-4	32	10	6.35	54	88	16	90	70	9	14	8.5	A/B	62	M8	T4
★ 4005-4	40	5	3.175	56	90	16	56	72	9	14	8.5	A/B	64	M8	T4
4010-4	40	10	6.35	62	104	18	93	82	11	17.5	11	A/B	70	M8	T4
5010-4	50	10	6.35	72	114	18	93	92	11	17.5	11	A/B	82	M8	T4
6310-4	63	10	6.35	85	131	22	100	107	14	20	13	B	-	M8	T4
6320-3	63	20	9.525	95	153	23	130	123	18	26	17.5	B	-	M8	T3
8010-4	80	10	6.35	105	150	22	92	127	14	20	13	B	-	M8	T4
8020-3	80	20	9.525	115	173	23	130	143	18	26	17.5	B	-	M8	T3

★ Left-handed thread is available.

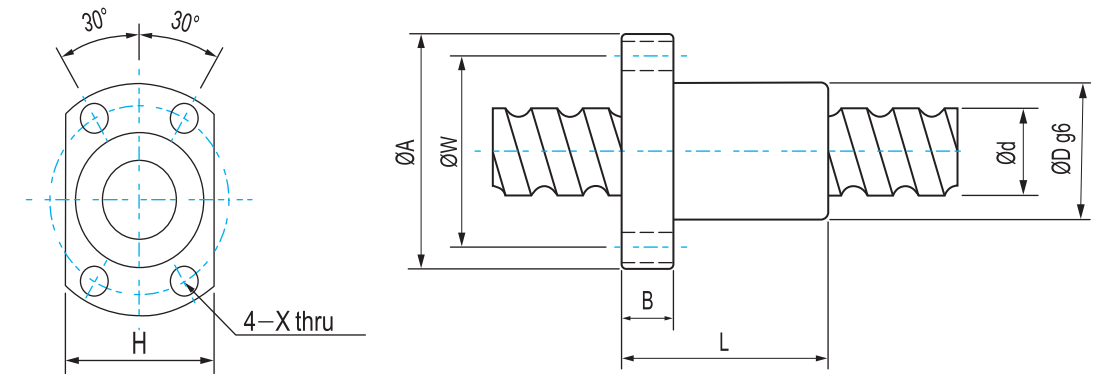
FSS Type



Unit : mm

Model	Dimension													
	d	l	Da	D	A	B	L	W	X	Type	H	Q	n	Ca(kgf)
1205-2.8	12	5	2	24	40	8	30	32	4.5	A	30	-	B1	513
1210-1.8	12	10	2	24	40	8	34	32	4.5	A	30	-	A1	347
1605-3.8	15	5	2.778	28	48	10	36	38	5.5	A	40	M6	C1	1159
1610-2.8	15	10	2.778	28	48	10	46	38	5.5	A	40	M6	B1	891
1616-1.8	15	16	2.778	28	48	10	45	38	5.5	A	40	M6	A1	609
1520-1.8	15	20	2.778	28	48	10	54	38	5.5	A	40	M6	A1	609
2005-3.8	20	5	3.175	36	58	10	36	47	6.6	A	44	M6	C1	1584
2010-3.8	20	10	3.175	36	58	10	56	47	6.6	A	44	M6	C1	1584
2020-3.6	20	20	3.175	36	58	10	55	47	6.6	A	44	M6	A2	1497
2510-3.8	25	10	3.5	40	62	10	64	51	6.6	A	48	M6	C1	1978
2525-1.8	25	25	3.175	40	62	10	65	51	6.6	A	48	M6	A1	920
3232-3.6	32	32	4.762	50	80	16	82	65	9	A	62	M6	A2	3197
4040-3.6	40	40	6.35	63	93	18	100	78	9	B	70	M8	A2	5225
														14404

FSK Type

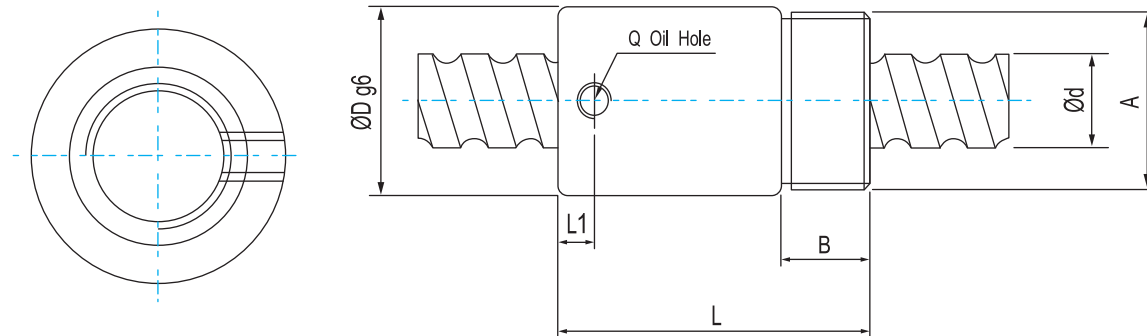


Unit : mm

Model	Dimension												
	d	l	Da	D	A	B	L	W	X	H	n	Ca(kgf)	Coa(kgf)
0601-3	6	1	0.8	12	24	3.5	18	18	3.4	16	T3	111	201
0801-3	8	1	0.8	14	27	4	20	21	3.4	18	T3	126	272
0802-3	8	2	1.2	16	29	4	26	23	3.4	20	T3	215	398
0825-3	8	2.5	1.2	16	29	4	26	23	3.4	20	T3	215	397
1002-3	10	2	1.2	18	35	5	28	27	4.5	22	T3	241	508
1003-3	10	3	1.8	24	44	8	32	34	4.5	27	T3	401	700
1004-3	10	4	2	26	46	10	35	36	4.5	28	T3	468	798
1202-3	12	2	1.2	20	37	5	28	29	4.5	24	T3	263	617
1204-3	12	4	2.381	28	48	6	35	39	5.5	30	T3	637	1117
1205-3	12	5	2	28	48	6	35	39	5.5	30	T3	506	952
1402-3	14	2	1.2	21	40	6	28	31	5.5	26	T3	282	724
1602-3	16	2	1.2	25	43	10	32	35	5.5	29	T3	301	837

● : Without seals

RSU Type

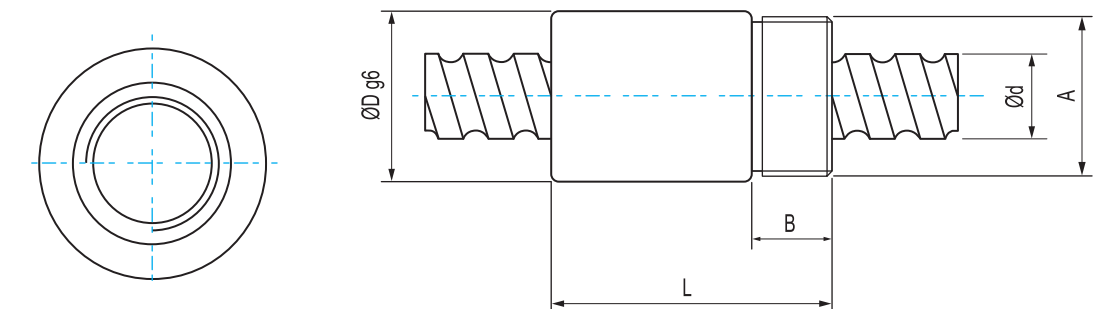


Unit : mm

Model	Dimension											
	d	l	Da	D	A	B	L	Q	L1	n	Ca(kgf)	Coa(kgf)
1604-3	16	4	2.381	29	M22X1.5P	8	32	-	-	T3	733	1536
1605-4	16	5	3.175	32	M30X1.5P	16	56	M6	6.5	T4	1361	2609
2005-4	20	5	3.175	38	M35X1.5P	16.5	59.5	M6	7	T4	1527	3390
2505-4	25	5	3.175	42	M40X1.5P	17	60	M6	7	T4	1716	4357
2510-4	25	10	4.762	42	M40X1.5P	17	90	M6	10	T4	2894	2610
3205-4	32	5	3.175	52	M48X1.5P	19	60	M6	7	T4	1932	5705
3210-4	32	10	6.35	52	M48X1.5P	19	93	M6	12	T4	4765	10565
4005-4	40	5	3.175	58	M56X1.5P	19	59	M8	6	T4	2147	7250
4010-4	40	10	6.35	65	M60X2P	27	102	M8	12	T4	5331	13636
5010-4	50	10	6.35	78	M72X2P	29	104	M8	12	T4	5986	17502

● : Without seals

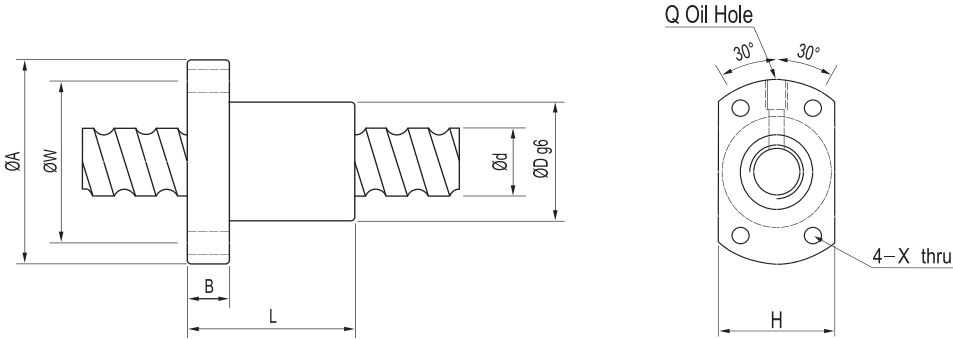
RSK Type (Without Seals)



Unit : mm

Model	Dimension									
	d	l	Da	D	A	B	L	n	Ca(kgf)	Coa(kgf)
0825-3	8	2.5	1.2	17.5	M15X1P	8	23.5	T3	215	397
1003-3	10	3	1.8	21	M18X1P	9	29	T3	401	700
1204-3	12	4	2.381	25.5	M20X1P	10	34	T3	637	1117
1205-3	12	5	2	25.5	M20X1P	10	39	T3	506	952
1605-3	16	5	3.175	32.5	M26X1.5P	12	42	T3	1063	1957

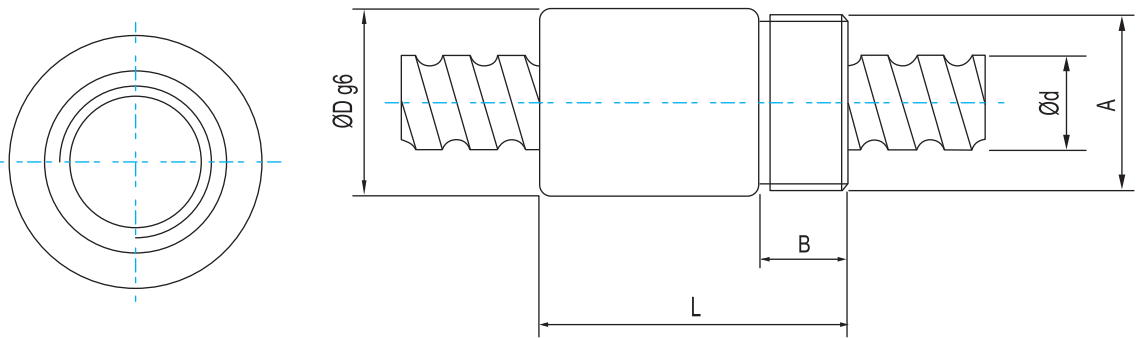
FSB Type



Unit : mm

Model	Dimensions													
	d	l	Da	D	A	B	L	W	X	H	Q	n	Ca(kgf)	Coa(kgf)
1404-3	14	4	2.381	31	50	10	40	40	4.5	37	M6	T3	687	1327
1405-3	14	5	3.175	32	50	10	45	40	4.5	38	M6	T3	995	1686
1605-3	16	5	3.175	34	54	10	42	44	4.5	40	M6	T3	1063	1957
2005-3	20	5	3.175	40	60	10	47	50	4.5	46	M6	T3	1192	2542
2505-3	25	5	3.175	43	67	10	47	55	5.5	50	M6	T3	1340	3268
2510-3	25	10	4.762	60	96	15	75	78	9	72	M6	T3	2260	4257
2510-4	25	10	4.762	60	96	15	97	78	9	72	M6	T4	2894	6210
3210-3	32	10	6.35	67	103	15	78	85	9	78	M6	T3	3721	7924
3210-4	32	10	6.35	67	103	15	97	85	9	78	M6	T4	4765	10565
4010-4	40	10	6.35	76	116	17	100	96	11	88	M6	T4	5331	13636

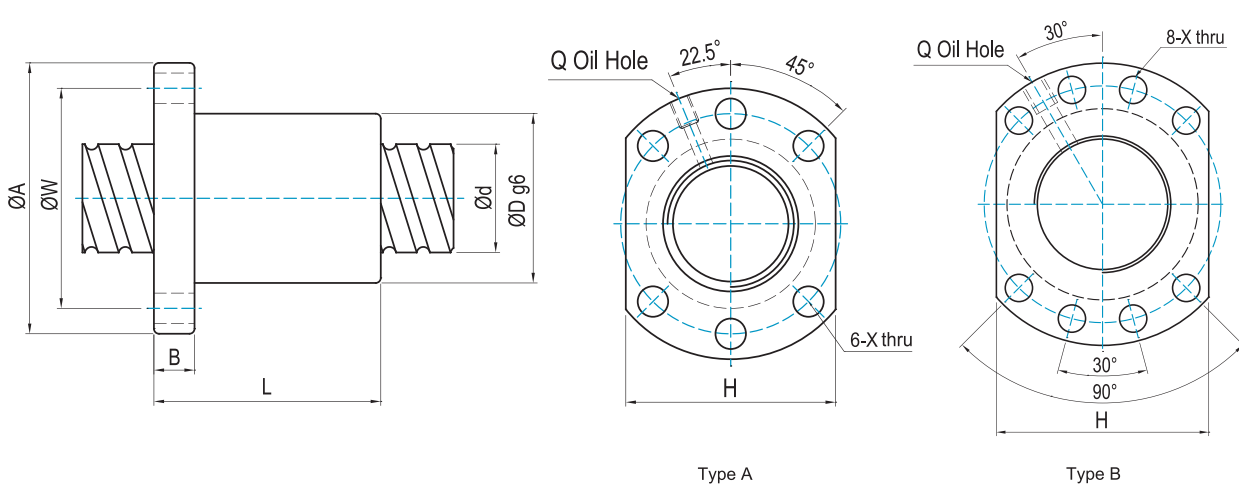
RSH Type



Unit : mm

Model	Dimensions									
	d	l	Da	D	A	B	L	n	Ca(kgf)	Coa(kgf)
12H2-1.5	12	12.7	2.381	29.5	M25x1.5P	12	50	A1	391	711
16H5-3.5	16	5.08	3.175	25.4	15/16"x16un	12.7	43.43	C1	1328	2805

FSU Type (DIN69051)

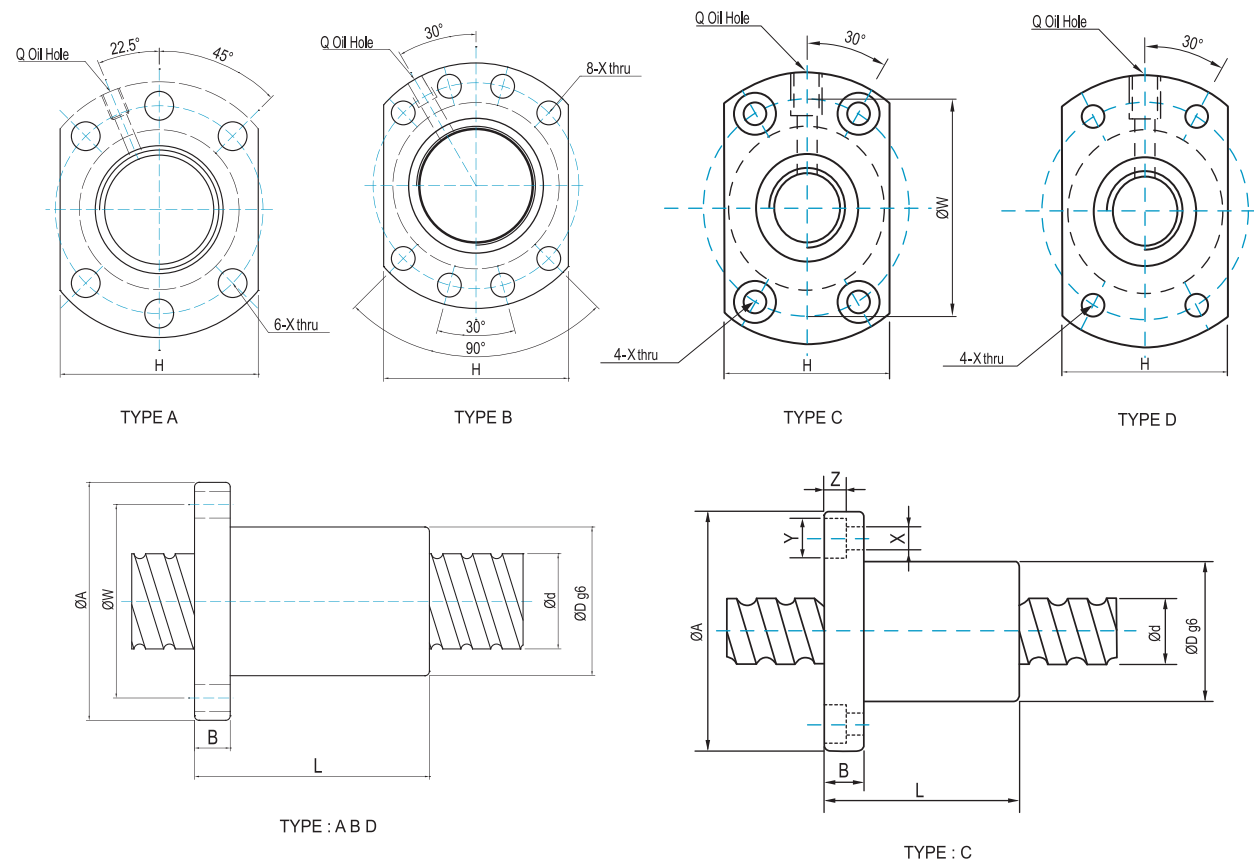


Unit : mm

Model No.	Dimensions														
	d	l	Da	D	A	B	L	W	X	Type	H	Q	n	Ca(kgf)	Coa(kgf)
1204-4	12	4	2.381	24	40	10	40	32	4.5	A	30	M6	T4	816	1489
1604-4	16	4	2.381	28	48	10	45	38	5.5	A	40	M6	T4	939	2048
★ 1605-3	16	5	3.175	28	48	10	42	38	5.5	A	40	M6	T3	1063	1957
★ 1605-4	16	5	3.175	28	48	10	50	38	5.5	A	40	M6	T4	1361	2609
2005-3	20	5	3.175	36	58	10	47	47	6.6	A	44	M6	T3	1192	2542
★ 2005-4	20	5	3.175	36	58	10	53	47	6.6	A	44	M6	T4	1527	3390
2006-3	20	6	3.969	36	58	10	52	47	6.6	A	44	M6	T3	1589	3062
2010-3	20	10	3.969	36	58	10	68	47	6.6	A	44	M6	T3	1603	3122
2504-4	25	4	2.381	40	62	11	46	51	6.6	A	48	M6	T4	1173	3350
2505-3	25	5	3.175	40	62	10	47	51	6.6	A	48	M6	T3	1340	3268
★ 2505-4	25	5	3.175	40	62	10	53	51	6.6	A	48	M6	T4	1716	4357
2510-3	25	10	4.762	40	62	12	75	51	6.6	A	48	M6	T3	2260	4657
2510-4	25	10	4.762	40	62	12	85	51	6.6	A	48	M6	T4	2894	6210
3205-4	32	5	3.175	50	80	12	53	65	9	A	62	M6	T4	1932	5705
3206-4	32	6	3.969	50	80	12	58	65	9	A	62	M6	T4	2592	6979
★ 3210-3	32	10	6.35	50	80	16	77.5	65	9	A	62	M6	T3	3721	7924
3210-4	32	10	6.35	50	80	16	90	65	9	A	62	M6	T4	4765	10565
★ 4005-4	40	5	3.175	63	93	16	56	78	9	B	70	M8	T4	2147	7250
4006-4	40	6	3.969	63	93	14	60	78	9	B	70	M6	T4	2880	8862
4010-4	40	10	6.35	63	93	18	93	78	9	B	70	M8	T4	5331	13636
5006-4	50	6	3.969	75	110	15	62	93	11	B	85	M8	T4	3208	11324
5010-4	50	10	6.35	75	110	18	93	93	11	B	85	M8	T4	5986	17502
6310-4	63	10	6.35	90	125	18	98	108	11	B	95	M8	T4	6727	22820
6320-3	63	20	9.525	95	135	20	138	115	13.5	B	100	M8	T3	8931	24831
8010-4	80	10	6.35	105	145	20	98	125	13.5	B	110	M8	T4	7519	29386
8020-3	80	20	9.525	125	165	25	143	145	13.5	B	130	M8	T3	10076	32217

★ Left-handed thread is available.

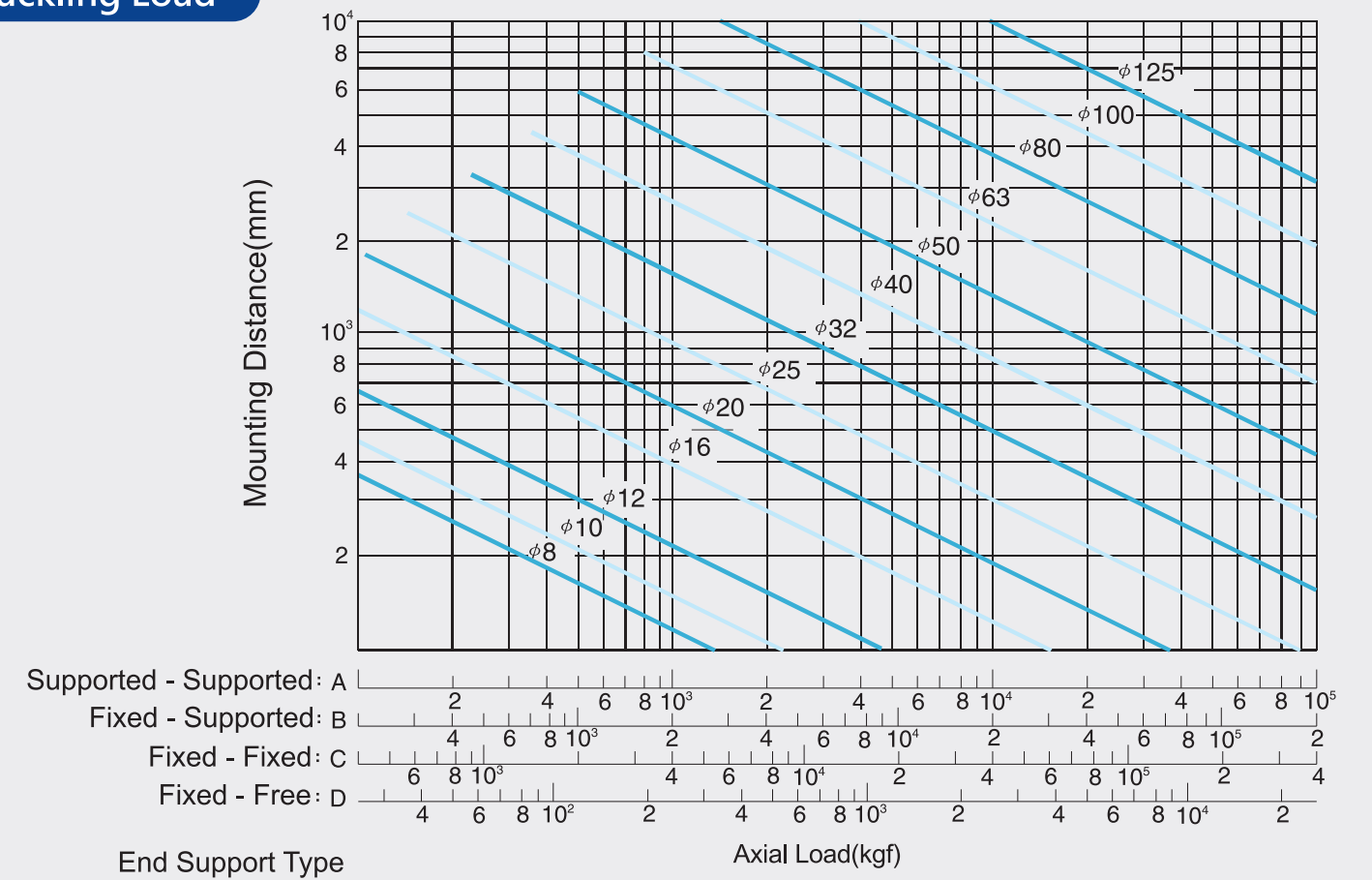
FSC Type



Unit : mm

Model No.	Dimensions																
	d	I	Da	D	A	B	L	W	X	Y	Z	Type	H	Q	n	Ca(kgf)	Coa(kgf)
1205-3	12	5	2	24	40	8	30	32	3.6	-	-	D	25	-	T3	513	1051
1210-2	12	10	2	30	50	10	34	40	4.5	8	4.5	C	32	M6	T2	347	657
1520-2	15	20	3.175	34	55	12	57	45	6	-	-	D	34	M6	T2	729	1353
1610-3	16	10	3.175	28	48	12	43	38	5.5	-	-	A	40	M6	T3	1097	2245
1616-4	16	16	3.175	28	48	12	48	38	5.5	-	-	A	40	M6	T4	1361	2886
2010-3	20	10	3.969	36	58	10	48	47	6.6	-	-	A	44	M6	T3	1648	3554
2525-4	25	25	3.969	47	74	12	67	60	6.6	-	-	A	56	M6	T4	2236	5590
3220-3	32	20	3.969	50	80	13	78	65	9	-	-	A	62	M6	T3	2013	5522
3232-4	32	32	4.762	56	86	16	82	71	9	-	-	A	65	M6	T4	3197	8612
4020-3	40	20	5.556	63	93	15	83	78	9	-	-	B	70	M8	T3	3530	9793
4040-4	40	40	6.35	65	95	18	100	80	9	-	-	B	72	M8	T4	5225	14404
5020-5	50	20	6.35	75	110	18	121	93	11	-	-	B	85	M8	T5	7401	23822
6310-6	63	10	6.35	90	135	20	94	108	13.5	-	-	B	100	M8	T6	8170	31750

Buckling Load



Critical Speed

